



PRESENTS:

Variations

On a theme of
Love

7pm Saturday,
13 February 2021
St Paul's Anglican Church
124 Brisbane St, Ipswich

WWW.IPSWICHCITYORCHESTRA.COM.AU

Proudly sponsored by



City of
Ipswich

Sponsored by



Acknowledgement of Country

Ipswich City Orchestras Inc
acknowledges the Country
and people of the Ipswich Region's
First Nations
and pay our respects to
Elders, past, present and emerging.



President's Message



Love. Empires have risen and fallen on its whims. Great oceans navigated and mighty mountains traversed. It can be said to be the greatest motivating force known to humankind. It has emboldened and inspired all those under its thrall to create great works of art, engineering and social justice.

It is however the quiet, gentle moments that bloom as silently as a rose, that remain unnoticed by the masses, unrecognised by history, unrecorded in the annals of prosperity, where Love truly binds us all together.

A moment of generosity in a busy world, the offer of encouragement and support to those in need, or the simple touch of held hands. These times garnish no fanfare. No march triumphant through Roman streets. These manifestations of Love meld to form an overwhelming power. The brightest candle in the darkest night.

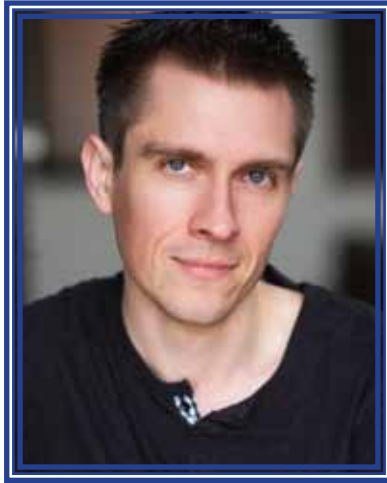
Since, as the Bard suggests, Music is the food of Love, your orchestra shall play on.



Christopher Trace L.L.B.(Hons), GDL, MBA, MQLS.



Artistic Director



It is with great pleasure that we welcome you to Ipswich City Orchestra's first concert of the 2021 season. It is hard to believe how much the world has changed in the last 12 months and especially the struggles we have all faced on many levels. Yet, it is wonderful that we can gather today to share in the joy of music in person - something the musicians on stage today do not take lightly.

Contemplating a concert on the theme of Love, today's concert is a throw-back to fond memories I had growing up in the '90s. I can remember listening late at night to Love Song Dedications with Richard Mercer on various radio stations. Listening to Richard's deep, dulcet voice as he read out the dedications from people across Australia with songs of Love in all facets, they could be both heart-warming and heartbreaking. I loved hearing people's stories, what drove them to their song selection, and how the songs added extra meaning to their relationships. I also remember partaking in the very vogue pastime waiting with a cassette recorder on pause to record and make a mixtape for that special someone in your life. Each song so carefully selected with meaning and purpose (and hopefully skipping the advertisements from the radio station).

So, consider today's concert a mixtape on my reflections on all types of love. Romantic, plutonic, forbidden, lost, hopeless, heart-wrenching, nostalgic, comedic, all of it will be covered today in a unique chamber music setting with our wonderful singers Julie Sibley and Troy Castle. In the great words of Hans Christian Andersen, "Where words fail, music speaks", and we look forward to sharing with you our Variations on Love and letting the music do the talking today.

Patrick Burns

Programme

Libertango

Astor Piazzola
arr. James Kazik

Can't Help Falling in Love with You

Weiss, Peretti & Creatore
arr. Robert Longfield

When She Loved Me from Toy Story 2

Randy Newmann
arr. John Moss

Salut D'Amour

Edward Elgar
arr. Elaine Fine

The Music of the Night from Phantom of the Opera

Lloyd-Webber & Hart
arr. Calvin Custer

I Dreamed a Dream from Les Miserables

Schonberg & Krezmer
arr. James Kazik

Theme from Cinema Paradiso

Ennio Morricone
arr. Bob Krogstad

Evermore from Beauty and the Beast

Menken & Rice
arr. James Kazik

Interval

Cold drinks available in the foyer



Programme

Continued

The Rainbow Connection

William & Ascher
arr. Patrick Burns

And So It Goes

Billy Joel
arr. Larry Moore

Both Sides Now 

Joni Mitchell
arr. Chris Chambers

Love Theme
from Romeo & Juliet

Nino Rota
arr. Robert Longfield

The Song That Goes
Like This
from Spamalot

Du Prez & Idle
arr. John Du Prez

You Raise Me Up

Graham & Lovland
arr. Roger Emerson

The Best of Abba

Andersson, Ulvaeus & Anderson
arr. Ted Ricketts





Performers

Conductor
Patrick Burns

Soloists
Julie Sibley & Troy Castle

Leader
Helen Carvolth

Violin
Celine Crellin, Hayden Burton & Laura Thomson,

Viola
Kathryn Fletcher & Matthew Ryan

Cello
Alex McPherson

Contrabass
Alexandra Elvin

Piano
Daniel Philippe

Percussion
Alanna Ritchie



Acknowledgements

Conetix Premier Web Hosting Provider
Heritage Conveyancing
Ipswich City Councillor's Discretionary Fund
Lance Castle Photography
Phil Smith Videography
Squishypaint Graphics
St Paul's Anglican Church, Ipswich



**IPSWICH CITY
ORCHESTRAS INC.**

Thank you



February 2021

WWW.IPSWICHCITYORCHESTRA.COM.AU